

Online

Social Impact Day 2020

2021/01/

23 Sat | 25 Mon | 26 Tue

Session List

2021.1.20 update

23 Sat

Pre-session



Social Impact Management 101 – Introduction

[JAPANESE only]

A great opportunity for:

- Those who would like to know what social impact management is all about
- Those who are new to social impact management
- Those who wish to deepening their learning from the Social Impact Day sessions!

If you have heard of Social Impact Management (SIM) or Social Impact Measurement, but do not know much about them, or if you are interested in them but do not know how to apply it in your practice, please join this seminar.

In this seminar, we will present the basics of social impact management and introduce case studies to gain a deeper understanding of social impact management, program evaluation, and the management cycle. By attending this seminar, you will be able to understand better each session of Social Impact Day and take home practical knowledge on how to apply it in your own practice.

Free admission

2020/01/23 Sat 17:00-
Free

< Speaker >

©Naoki CHIBA
CEO, Blue Marble Japan, Inc.

©Erika OIKE
Program officer, Meals on Wheels Japan

©Kenta SHINDO
Assistant Professor, Gunma University of Health and Welfare,
Faculty of Social Welfare

25 Mon Welcome

(Free)

9:00-10:00 JST

Opening Panel: Why Social Impact Now? - Focusing on Social Impact from a Global Perspective

[JAPANESE only]

Whether it is widening disparities or climate change, global and domestic issues are becoming more serious and challenging. At the same time, momentum is building toward the development of a sustainable society, where the role of the private sector is gaining attention. Our question is why focus on social impact, and what kind of economy and society is envisioned by promoting social impact? How can we measure social values, which cannot be measured by current economic yardstick? We will open the Social Impact Day with these questions and with an invitation to join in this global conversation.



Speaker

Ken SHIBUSAWA
Founder, Shibusawa and Company, Inc. , Chairman, Commons Asset Management / Member, Governing Council, Social Impact Management Initiative



Speaker

Atsumi ARIMA
Director, Seibu Railway Co., Ltd., Director, Prince Hotels, Inc. / Member, Governing Council, Social Impact Management Initiative



Speaker

Yuriko MINAMOTO
Professor, Graduate School of Governance Studies, Meiji University / Member, Governing Council, Social Impact Management Initiative



Moderator

Katsuji IMATA
President, Social Impact Management Initiative / Co-CEO, Blue Mable Japan, Inc.

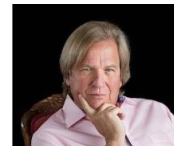
25 Mon Keynote Speech

(Free)

10:10-11:40 JST

Rethinking the Value of Money: The Future of Social Impact Management (recording, simultaneous Interpretation))

[JAPANESE / ENGLISH] This session will cover global movements and their implications for Japan and the US regarding new trends in social impact management, impact investing, stakeholder capitalism, rethinking the value of money and social impact. There will be a general discussion on how the new capital movements are driving social change and how social impact management works.



Speaker

Jed Emerson
Founder, Blended Value



Speaker

Miyuki ZENIYA
Head of Sustainable Finance, The Dai-ichi Life Insurance Company, Limited



Moderator

Ken ITO
Executive Director, Social Impact Management Initiative / Executive Director, Social Value Japan

25 Mon Session 1

(Paid)

13:00-13:50 JST

SDG Impact: Global Trends and Japan's Role in Achieving the SDGs

[JAPANESE only]

With only 9 years left to achieve the SDGs (Sustainable Development Goals), the United Nations Development Programme (UNDP) has launched the SDG Impact to contribute to the achievement of a sustainable society by accelerating social impact management. Mr. Shibusawa, a member of the SIMI Governing Council, will introduce the SDG Impact where he participates as a member of the Steering Group, and discuss how Japanese companies and the social sector organizations can participate in this initiative.



Speaker

Ken SHIBUSAWA
Founder, Shibusawa and Company, Inc. ,
Chairman, Commons Asset Management /
Member, Governing Council, Social Impact Management Initiative



Moderator

Katsuji IMATA
President, Social Impact Management Initiative /
Co-CEO, Blue Mable Japan, Inc.

25 Mon Session 2

(Paid)

14:00-14:50 JST

Using Social Impact Management in the Community

[JAPANESE only]

Thus far, social impact measurement was mainly practiced by non-profit organizations in urban areas, but with the launch of the Act on the Utilization of Dormant Deposits, it is now attracting attention from the nonprofits throughout Japan, as it is mandated in the Act. However, its management and utilization are still in the process of development. In this session, we will invite practitioners who are already working on social impact measurement and management in their local communities to discuss how to effectively use them in the community and regional initiatives and what issues need to be addressed in the development and dissemination of this approach.



Speaker

Michiko YAMAGUCHI



Speaker

Ayano SATO
Non-profit Management Support ANOYA



Speaker

Yuriko MINAMOTO
Professor, Graduate School of Governance Studies,
Meiji University / Member,
Governing Council, Social Impact Management Initiative



Speaker

Daisuke TAKAYAMA
Director/Staff , Hokkaido Npo Fund



Moderator

Masao KAWAI
NPO Capacity Building and Empowerment Consultant, office musubime

25 Mon Session 3

15:00-15:50 JST (Paid)

International Trends in Sustainability Disclosure - Harmonization of GRI, SASB, IIRC, CDP and CDSB

[JAPANESE only]

Many international frameworks and standards have been proposed for the disclosure of non-financial information and about social and environmental aspects of company operations. In recent years, they have received attention as ways of framing measurement metrics in impact management. In September 2020, the leading frameworks and standard-setting bodies released a joint statement, while the IFRS Foundation which governs the International Accounting Standards Board proposed the establishment of a new Sustainability Standards Board, and in November, the IIRC and SASB announced their merger plan.

In this session, we invite experts who are closely watching and working on these trends to discuss where non-financial information disclosure is headed.



Speaker

Yoichi MORI
Chair of the Corporate Disclosure Technical Committee, The Japanese Institute of Certified Public Accountants



Speaker

Hidemi TOMITA
Managing Director, Lloyd's Register Japan KK



Speaker

Yuki ISOGAI
Technical Lead, Sustainability Center of Excellence, PwC Japan Partner, PricewaterhouseCoopers Sustainability LLC



Moderator

Takeshi MIZUGUCHI
Professor, Department of Business Management, Faculty of Economics, Takasaki City University of Economics / Member, Governing Council, Social Impact Management Initiative

25 Mon Session 4

(Free)

16:00-17:00 JST

Microfinance and Impact Evaluation: A Gender Lens

[JAPANESE / ENGLISH]

The microfinance market continues to grow. Microfinance has made a huge difference in the lives of many clients, especially women who make up the majority. This session will explore the prospects for microfinance by strengthening impact measurement and management (IMM) from a gender perspective, with two speakers involved in the front lines.



Speaker

Natasha GARCHA
Director, Innovative Finance – Impact Investment Exchange (IIX)



Speaker

Cheriël NEO
Impact Measurement Lead, GOJO & Company, Inc.



Moderator

Ayaka MATSUNO
Director, Gender Investment and Innovation Department, The Sasakawa Peace Foundation

26 Tue Session 5

(Paid)

9:00-10:20 JST

Social Impact Management – Latest Trends and Who Gets to Decide What

In the global movement of impact investing, there is a growing consensus on what is “good” impact management. What is it, what kind of relationship between the investors and investees is drawn up as feasible and desirable, and how different stakeholders should be involved? And what are the emerging trends? This session will have to globally-renowned speakers give us a glimpse of these themes. Then, they will have a dialogue with the Japanese practitioners to highlight key considerations of impact management.



Speaker

Karim HARJI
Program Director,
Oxford Impact
Measurement
Programme,
University of Oxford
(Canada)



Speaker

Sara OLSEN
Founder & CEO,
Social Value US
- SVT Group
(Social
Venture
Technology
Group)



Speaker

Yoshiaki ISHIKAWA
CFO and Impact Officer,
Life is Tech, Inc.



Speaker

Chika OCHIAI
Director at K-three
Inc. / Research
fellow at Graduate
School of Media and
Governance, Keio
University

26 Tue Session 6

(Paid)

10:30-11:50 JST

International Trends in Indicator Metrics and Databases – Working Towards the Japanese Version of IRIS+ (Simultaneous Interpretation)

[JAPANESE / ENGLISH]

An indicator metrics database plays an important role in the communication of information about social impact. The GIIN (USA), which has been playing a leading role in this domain globally, released IRIS+ in 2019 as an update of IRIS. We will invite speakers from GIIN's unit that manages IRIS+ to hear about the key points for implementation and the trend of this field.



Speaker

GIIN



Moderator

Ken ITO
Executive Director,
Social Impact
Management Initiative /
Executive Director,
Social Value Japan

26 Tue Session 7

(Paid)

13:00-13:50 JST

Sharing Case Studies: Social Impact Management Practices by Enterprises

[JAPANESE only]

This session will introduce social impact management practices in Japan. It will help participants to understand the necessary elements for practicing social impact management in business including nonprofits, and to learn from the actual implementation of social impact management. In addition to introducing case studies, the summary of the tips for success and trial-and-error will encourage the participants to put them into practice in their own undertaking.



Speaker

Yutaka YAMAUCHI
Member of Directors,
Center for Person-
Centered Ningen, Omuta



Speaker

Hiromi TENGEJI
Representative
Director, Kopernik
Japan



Moderator

Asami TAKAGI
Director, Social
Impact Management
Initiative / Founder,
Stem for Leaves

26 Tue Session 8

(Paid)

14:00-14:50 JST

Social Impact x Public Sector: Kanagawa Prefecture and Marugame City's Challenge on Social Impact Management

[JAPANESE only]

This session will focus on innovative cases of social impact management in the public sector, whose practice of impact management is increasing. In particular, we will discuss how local (prefectural and municipal) governments are using social impact management, what challenges they have and are trying to overcome, and what lessons they have learned. We will introduce the efforts of Kanagawa Prefecture in forming an ecosystem of a SDGs-focused impact and financial management, and Marugame City's introduction of social impact management in the construction of its "Theater for Everyone.



Speaker

Kentaro
YAMAGUCHI
Special Assistant to the
Governor(for SDGs),
Kanagawa Prefectural
Government)



Speaker

Tsuyoshi MURAO
Manager of Civic Hall
Construction Planning
Office, Culture Division,
Industry&Culture
Dept.,Marugame City



Moderator

Masaki KOCHI
Director, Social
Impact
Management
Initiative / CEO, K-
three

26 Tue Session 9

(Paid)

15:00-15:50 JST

Using Social Impact Management for Enterprises

[JAPANESE only]

This session will focus on case studies of social impact management in corporate CSR. In recent years, attention to social impact management in corporate CSR has been increasing. In this session, we will take up the advanced case studies and discuss what is needed to promote collaboration among businesses and funders (corporate CSR) to create even higher social value.



Speaker

Kotoko TOGO
Chief, CSR & Citizenship Department, Groupwide Brand Strategic Division, Panasonic Corporation



Speaker

Aki MATSUYAMA
Director, Salesforce.org, salesforce.com Co.,Ltd.



Moderator

Yoshihiro KAMOZAKI
Executive Director, Social Impact Management Initiative / Executive Director, Japan Fundraising Association

26 Tue Closing

(Paid)

16:00-17:00 JST

The Future of Social Impact Management: Creating Multi-sectoral Approach

[JAPANESE only]

In the closing session, we will summarize and integrate the findings of each session. The knowledge gained from the two days of sessions will be shared, and the future of social impact management and the significance of its development from the point of view of SIMI's board members will be discussed in a comprehensive manner.



Guest Commentator

Mitsuaki AOYAGI
Vice-chair of Executive Committee, Social Innovation and Investment Foundation / Member, Governing Council, Social Impact Management Initiative



Speaker

Ken ITO
Executive Director, Social Impact Management Initiative / Executive Director, Social Value Japan



Speaker

Masaki KOCHI
Director, Social Impact Management Initiative / CEO, K-three



Moderator

Katsuji IMATA
President, Social Impact Management Initiative / Co-CEO, Blue Mable Japan, Inc.



Speaker

Asami TAKAGI
Director, Social Impact Management Initiative / Founder, Stem for Leaves



Moderator

Yoshihiro KAMOZAKI
Executive Director, Social Impact Management Initiative / Executive Director, Japan Fundraising Association